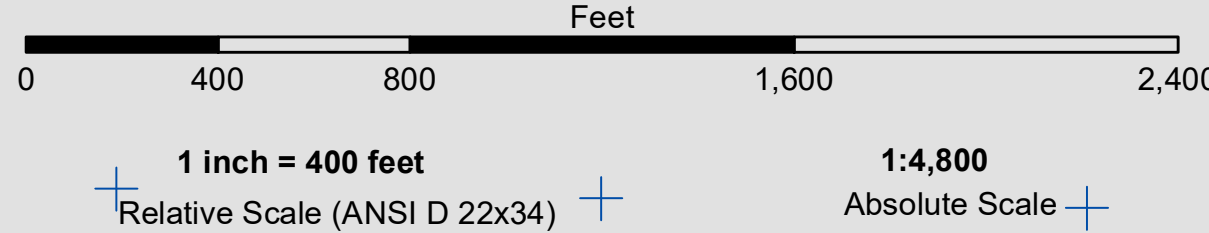


PRELIMINARY ISSUE
THIS PLAN ISSUED FOR
ADVANCE INFORMATION ONLY

US Army Corps of Engineers
San Francisco District
450 Golden Gate Ave.
San Francisco, CA 94102

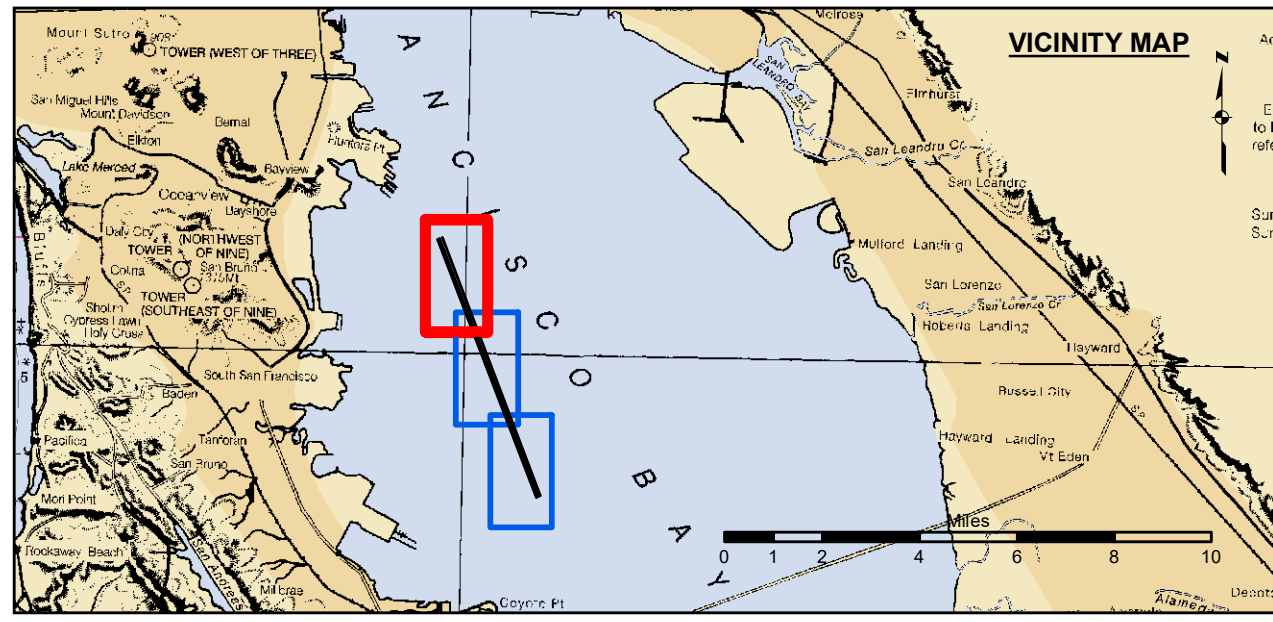
DISCLAIMER
The United States Government furnishes this information for the general information of the recipient and does not warrant, represent, or imply concerning the accuracy, completeness, or reliability of the information and the data furnished. The United States shall be under no liability whatsoever to any person by reason of any use made hereof. These data belong to the Government. Therefore the recipient may not transfer these data to others without also transferring this Disclaimer.

Chart Date:	Mar 06, 2023
Designed by:	PDT
Drawn by:	PDT
Surveyed By:	
Plotted By:	PDT
Checked By:	PDT
Approved:	Chief, Construction Branch



CENTERLINE ANGLE POINTS NAD 1983		
CENTERLINE ∠	EAST	NORTH
C1	6028432.2184	2082797.0402
C2	6039090.2184	2054839.0402

CHANNEL ANGLE POINTS NAD 1983		
CHANNEL ∠	EAST	NORTH
1	6028665.8184	2082886.0402
2	6039323.8184	2054933.0402
3	6038856.6184	2054749.9402
4	6028198.6184	2082707.9402



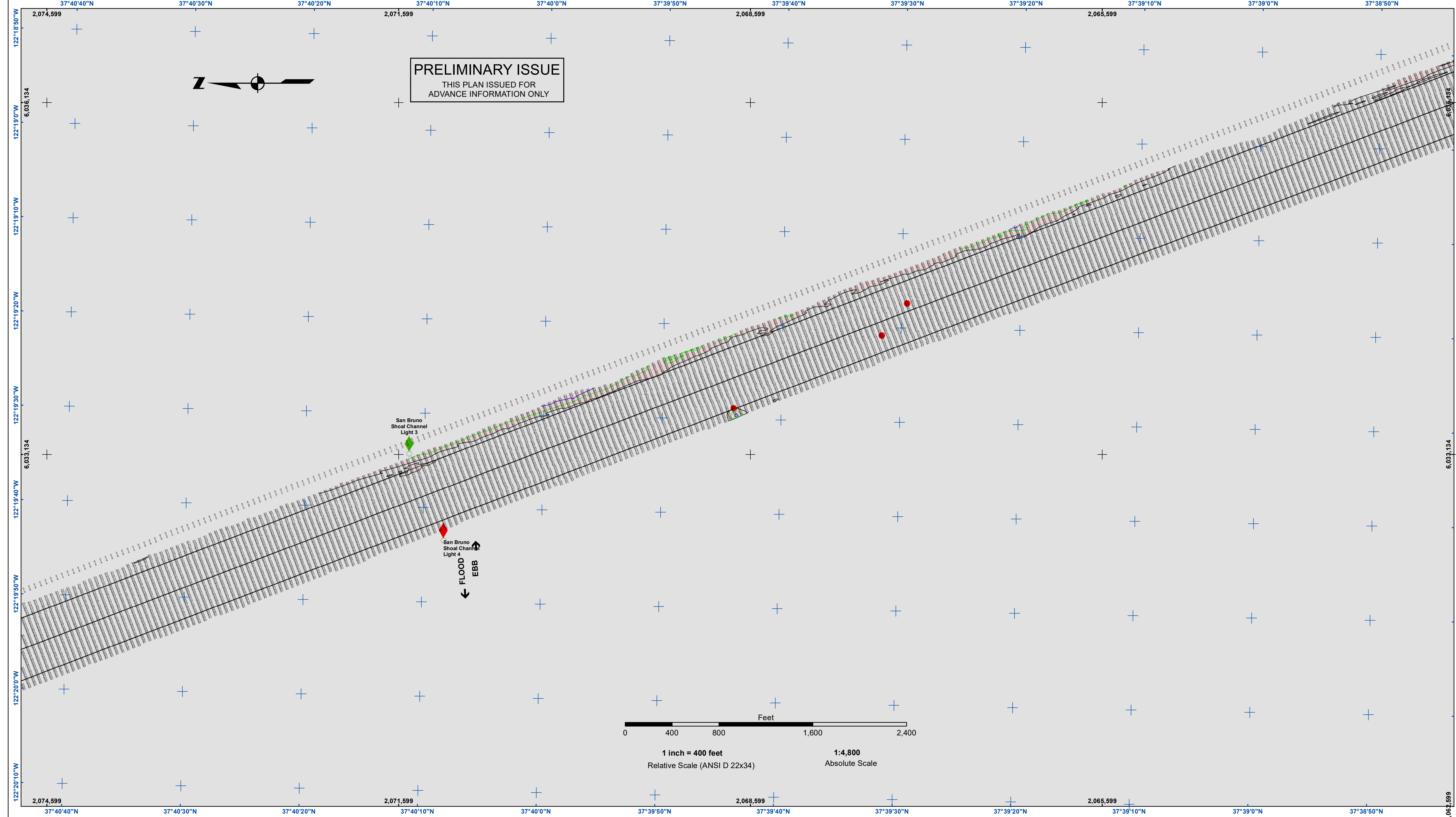
- | | | |
|----------------------------|--------------------|-----------------|
| Federal Navigation Channel | Beacon, General | Contours |
| Shoaling Area | Obstruction Point | -30 |
| Placement Area | Navigation Buoy | -29 |
| Anchorage Area | Navigation Buoy | -28 |
| Wreck Area | Shoalest Sounding* | -27 |
| Submerged Wreck | | -26 |
| Angle Point | | |

NOTES:
DRAWING NOT TO BE USED FOR NAVIGATION. ONLY CHANNEL CONDITION AT DATE OF SURVEY.
THE LOCATION OF ALL NAVIGATION AIDS ARE BASED ON INFORMATION PROVIDED BY THE U.S. COAST GUARD. BUOY LOCATIONS REPRESENT THE POSITION OF THE SINKER ONLY.
INFORMATION DEPICTED ON THIS MAP REPRESENTS THE RESULTS OF SURVEYS MADE ON THE DATES INDICATED AND CAN ONLY BE CONSIDERED AS INDICATING THE GENERAL CONDITIONS AT THAT TIME.
SURVEYED BY THE CORPS OF ENGINEERS.
*SHOALEST SOUNDING PER QUARTER PER REACH

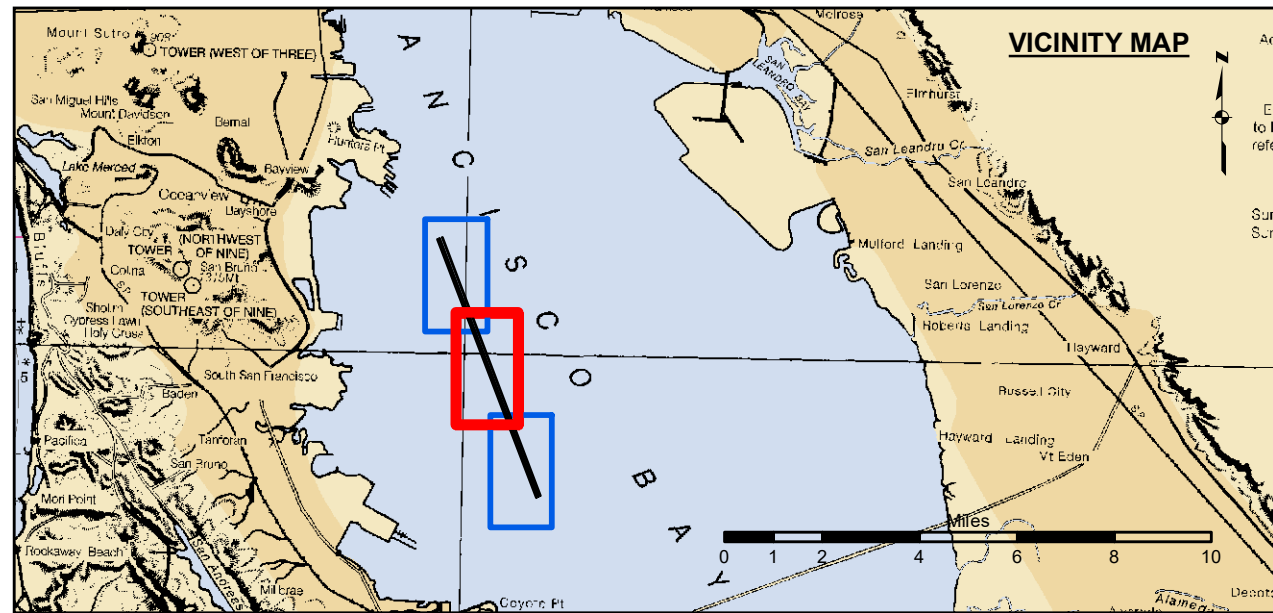
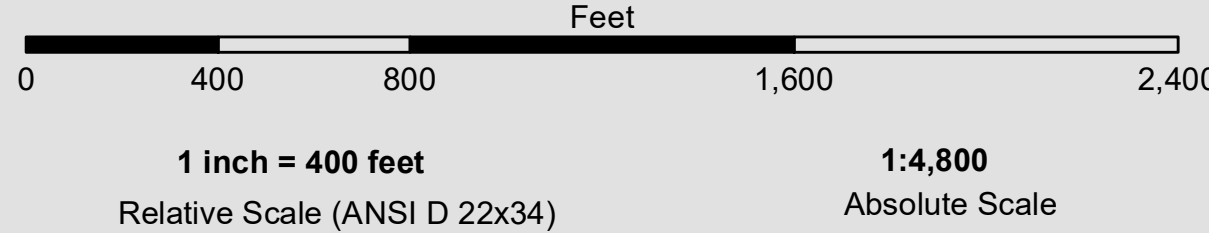
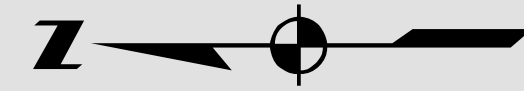
SOUNDINGS WERE TAKEN BY FATHOMETER AND ARE SHOWN TO THE NEAREST TENTH OF A FOOT.
SOUNDINGS ARE BASED ON THE DATUM OF MEAN LOWER LOW WATER AT THE LOCALITY.
PLANE GRID, BEARING AND COORDINATES ARE BASED ON THE STATE OF CALIFORNIA COORDINATE SYSTEM, LAMBERT CONFORMAL PROJECTION, ZONE III NAD 83, CALIFORNIA, AS DESCRIBED IN SPECIAL PUBLICATION NO. 253, PUBLISHED BY NATIONAL OCEAN SURVEY.
THE PROJECT DEPTH IS 30 FEET AT M.L.L.W.
CONTROL: SOUNDINGS ARE BASED ON THE TIDE GAUGE LOCATED AT THE HYDE STREET PIER, SAN FRANCISCO, CALIFORNIA.
CONTROL:
NOAA 941 4358
BM 'S 1941': 15.74 FT MLLW
HUNTERS POINT TIDE GAUGE: 13 FT MLLW
NAIL AND BRASS WASHER (ORANGE RIBBON ATTACHED) ON PILING AT SE CORNER OF PIER 80
NAIL LEVELED BY USACE ON 14 FEBRUARY 2016.
HORIZONTAL COORDINATES: POST PROCESSED RTK FROM LOCAL REFERENCE STATIONS

SAN MATEO COUNTY
SAN BRUNO SHOAL
CONDITION SURVEY
28 FEBRUARY 2023

Sheet Reference Number
1 of 3



PRELIMINARY ISSUE
THIS PLAN ISSUED FOR
ADVANCE INFORMATION ONLY



	Federal Navigation Channel		Beacon, General	Contours	
	Shoaling Area		Obstruction Point		-30
	Placement Area		Navigation Buoy		-29
	Anchorage Area		Navigation Buoy		-28
	Wreck Area		Shoalest Sounding*		-27
	Submerged Wreck				-26
	Angle Point				

NOTES:
DRAWING NOT TO BE USED FOR NAVIGATION. ONLY CHANNEL CONDITION AT DATE OF SURVEY.
THE LOCATION OF ALL NAVIGATION AIDS ARE BASED ON INFORMATION PROVIDED BY THE U.S. COAST GUARD. BUOY LOCATIONS REPRESENT THE POSITION OF THE SINKER ONLY.
INFORMATION DEPICTED ON THIS MAP REPRESENTS THE RESULTS OF SURVEYS MADE ON THE DATES INDICATED AND CAN ONLY BE CONSIDERED AS INDICATING THE GENERAL CONDITIONS AT THAT TIME.
SURVEYED BY THE CORPS OF ENGINEERS.
CONTROL: SOUNDINGS ARE BASED ON THE TIDE GAUGE LOCATED AT THE HYDE STREET PIER, SAN FRANCISCO, CALIFORNIA.
*SHOALEST SOUNDING PER QUARTER PER REACH

SOUNDINGS WERE TAKEN BY FATHOMETER AND ARE SHOWN TO THE NEAREST TENTH OF A FOOT.
SOUNDINGS ARE BASED ON THE DATUM OF MEAN LOWER LOW WATER AT THE LOCALITY.
PLANE GRID, BEARING AND COORDINATES ARE BASED ON THE STATE OF CALIFORNIA COORDINATE SYSTEM, LAMBERT CONFORMAL PROJECTION, ZONE III NAD 83, CALIFORNIA, AS DESCRIBED IN SPECIAL PUBLICATION NO. 253, PUBLISHED BY NATIONAL OCEAN SURVEY.
THE PROJECT DEPTH IS 30 FEET AT M.L.L.W.
CONTROL: SOUNDINGS ARE BASED ON THE TIDE GAUGE LOCATED AT THE HYDE STREET PIER, SAN FRANCISCO, CALIFORNIA.
CONTROL:
NOAA 941 4358
BM 'S 1941": 15.74 FT MLLW
HUNTERS POINT TIDE GAUGE: 13 FT MLLW
NAIL AND BRASS WASHER (ORANGE RIBBON ATTACHED) ON PILING AT SE CORNER OF PIER 80
NAIL LEVELED BY USACE ON 14 FEBRUARY 2016.
HORIZONTAL COORDINATES: POST PROCESSED RTK FROM LOCAL REFERENCE STATIONS



DISCLAIMER: The United States Government furnishes no warranty, expressed or implied, concerning the accuracy, completeness, or reliability of the information and the data furnished. The United States shall be under no liability whatsoever to any person by reason of any use made thereof. These data belong to the Government. Therefore the recipient may not transfer these data to others without also transferring this Disclaimer.

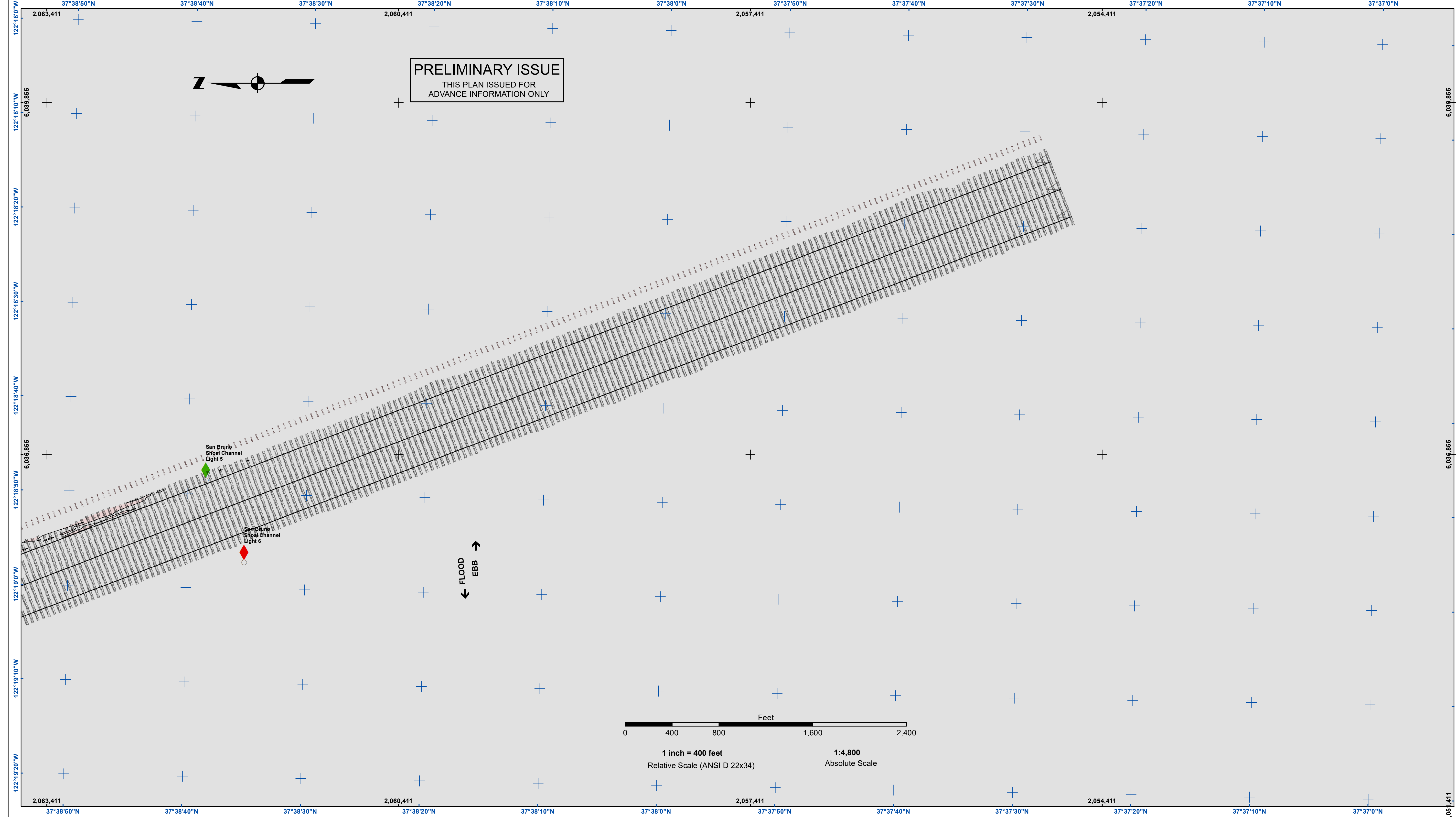
Access Constraints: The United States Government furnishes no warranty, expressed or implied, concerning the accuracy, completeness, or reliability of the information and the data furnished. The United States shall be under no liability whatsoever to any person by reason of any use made thereof. These data belong to the Government. Therefore the recipient may not transfer these data to others without also transferring this Disclaimer.

Distribution Liability: The data represents the results of data collection/processing for a specific US Army Corps of Engineers activity and indicates the general existing conditions. The user is responsible for the results of any application of the data for other than its intended purpose.

Prepared Under the Direction of KEVIN P. ARNETT LT COLONEL, C.E., DISTRICT ENGINEER	Surveyed By:	Chart Date:
Submitted: Hydro Survey Team Leader	Plotted By: PDT	Mar 06, 2023
Recommended: Chief, Hydro Survey Section	Checked By: PDT	Designed by: PDT
Approved: Chief, Construction Branch	Drawn by: PDT	

SAN MATEO COUNTY
SAN BRUNO SHOAL
CONDITION SURVEY
28 FEBRUARY 2023

Sheet Reference Number
2 of 3



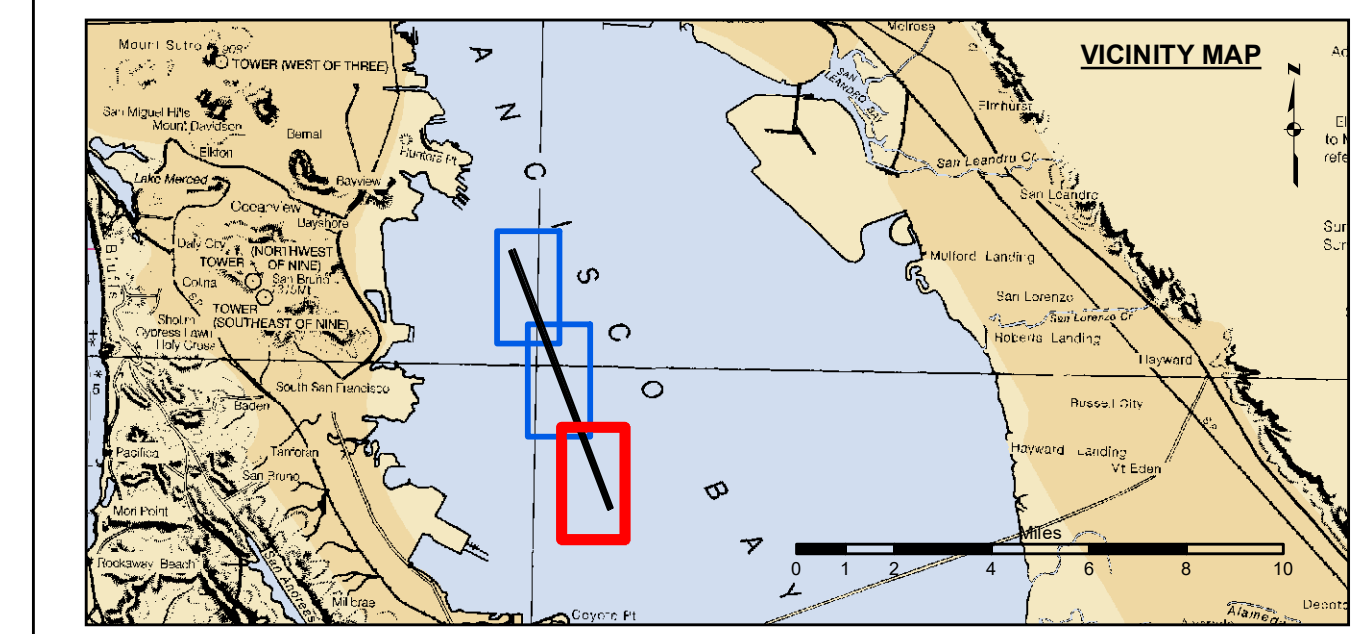
US Army Corps of Engineers
San Francisco District
450 Golden Gate Ave.
San Francisco, CA 94102

DISCLAIMER
The United States Government makes no warranty, expressed or implied, concerning the accuracy, completeness, or reliability of the information and data furnished. The United States shall be under no liability whatsoever to any person by reason of any use made hereof. These data belong to the Government. Therefore the recipient may not transfer these data to others without also transferring this Disclaimer.

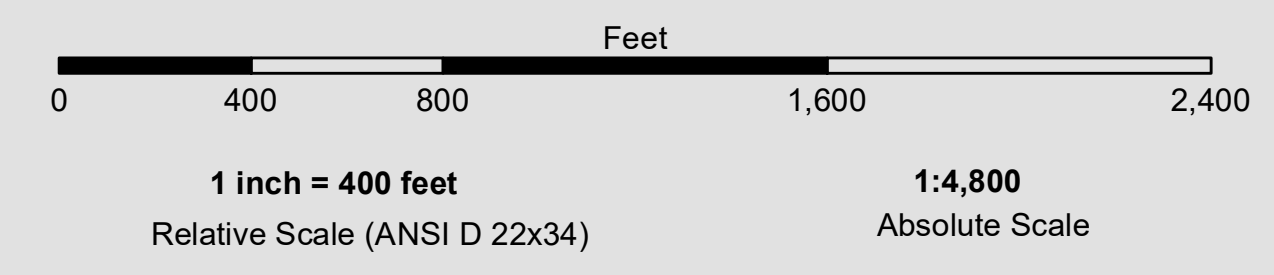
Prepared Under the Direction of KEVIN P. ARNETT LT Colonel, C.E., District Engineer	Chart Date: Mar 06, 2023
Submitted: Hydro Survey Team Leader	Designed by: PDT
Recommended: Chief, Hydro Survey Section	Drawn by: PDT
Approved: Chief, Construction Branch	

CALIFORNIA
SAN BRUNO SHOAL
CONDITION SURVEY
28 FEBRUARY 2023

Sheet Reference Number
3 of 3



Federal Navigation Channel	Beacon, General	Contours
Shoaling Area	Obstruction Point	-30
Placement Area	Navigation Buoy	-29
Anchorage Area	Navigation Buoy	-28
Wreck Area	Shoalest Sounding*	-27
Submerged Wreck		-26
Angle Point		



NOTES:
DRAWING NOT TO BE USED FOR NAVIGATION. ONLY CHANNEL CONDITION AT DATE OF SURVEY.
THE LOCATION OF ALL NAVIGATION AIDS ARE BASED ON INFORMATION PROVIDED BY THE U.S. COAST GUARD. BUOY LOCATIONS REPRESENT THE POSITION OF THE SINKER ONLY.
INFORMATION DEPICTED ON THIS MAP REPRESENTS THE RESULTS OF SURVEYS MADE ON THE DATES INDICATED AND CAN ONLY BE CONSIDERED AS INDICATING THE GENERAL CONDITIONS AT THAT TIME.
SURVEYED BY THE CORPS OF ENGINEERS.
CONTROL: SOUNDINGS ARE BASED ON THE TIDE GAUGE LOCATED AT THE HYDE STREET PIER, SAN FRANCISCO, CALIFORNIA.
CONTROL:
NOAA 941 4358
BM 'S 1941': 15.74 FT MLLW
HUNTERS POINT TIDE GAUGE: 13 FT MLLW
NAIL AND BRASS WASHER (ORANGE RIBBON ATTACHED) ON PILING AT SE CORNER OF PIER 80
NAIL LEVELED BY USACE ON 14 FEBRUARY 2016.
HORIZONTAL COORDINATES: POST PROCESSED RTK FROM LOCAL REFERENCE STATIONS